



University
October University for
Modern Sciences and Arts
جامعة أكتوبر للعلوم الحديثة والآداب



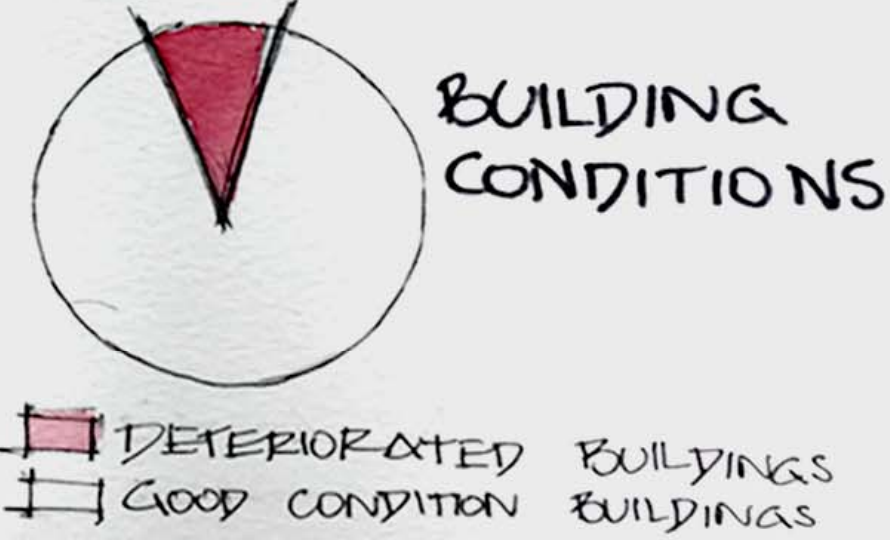
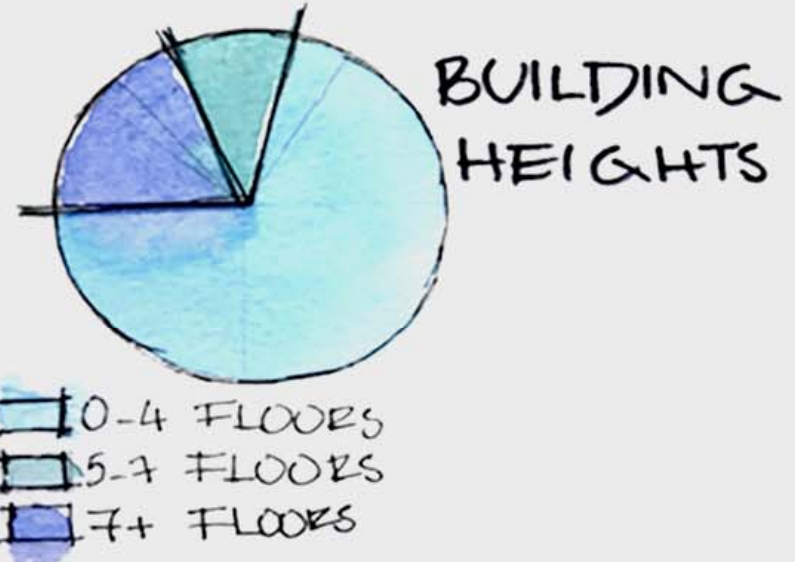
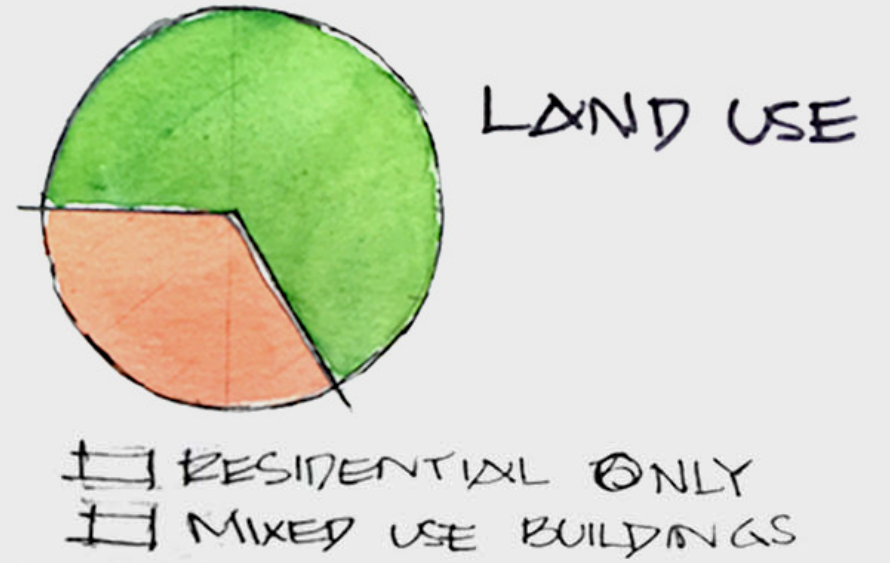
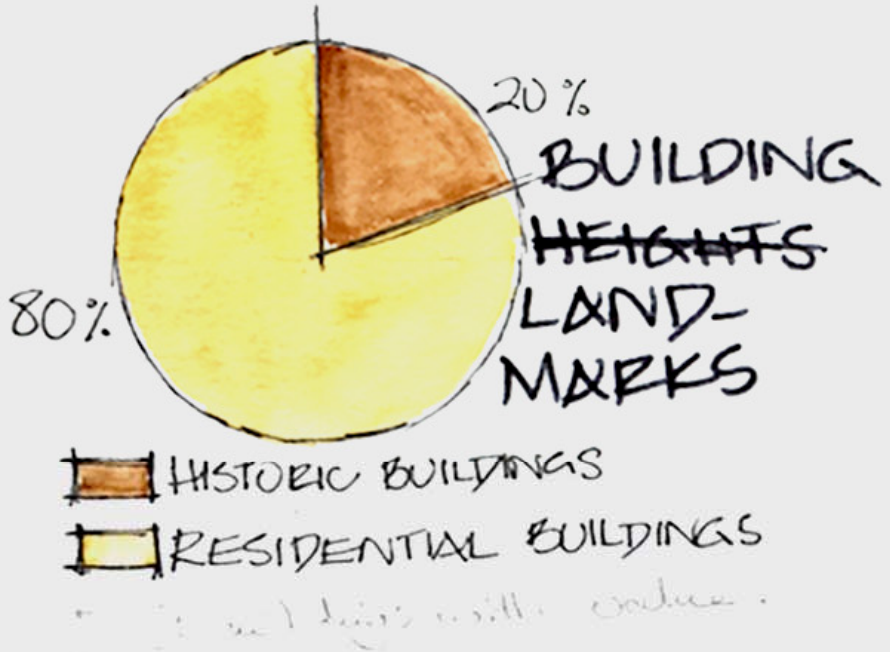
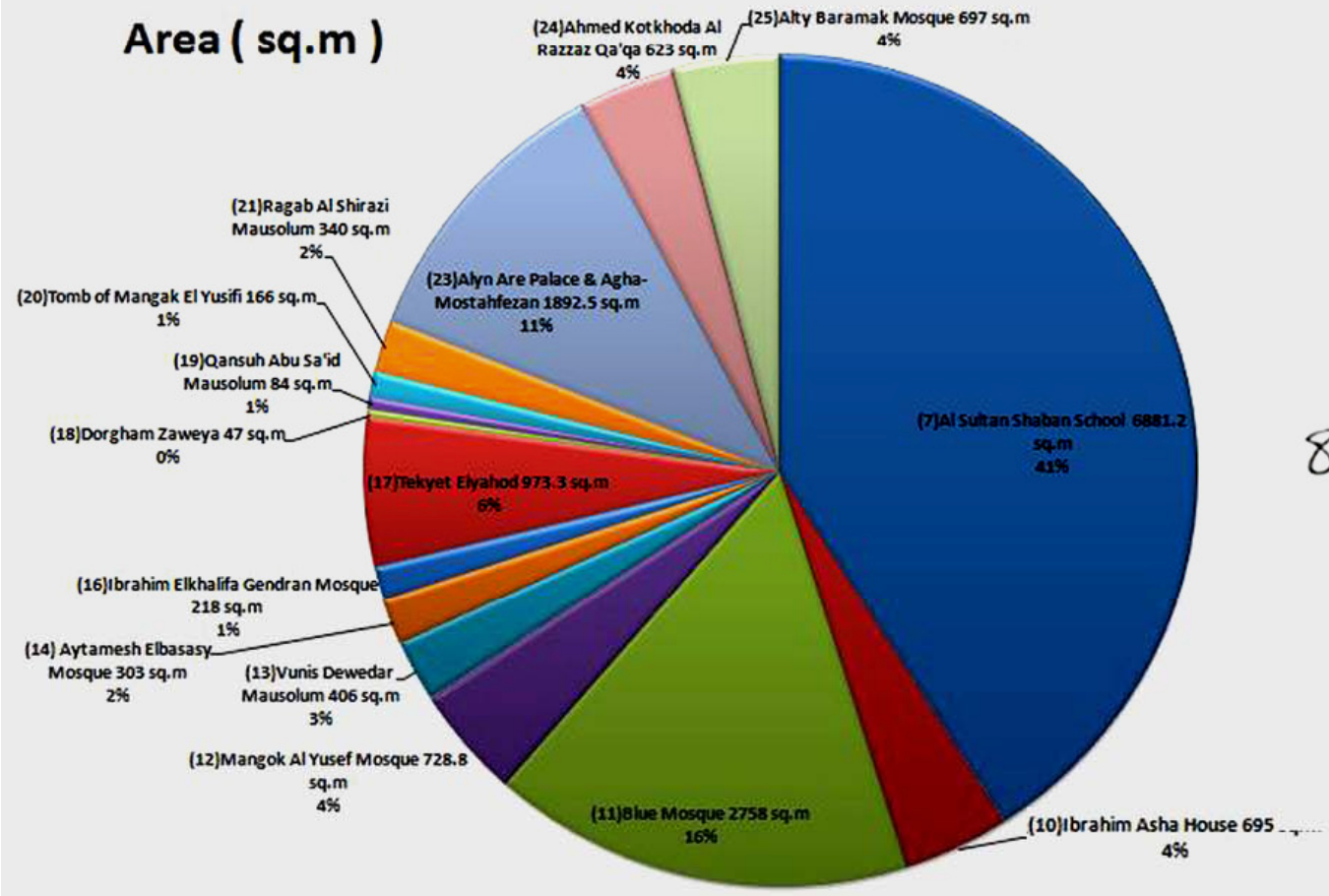
the
UNIVERSITY
of
GREENWICH

تقانة
البحر

flow chart for landmarks

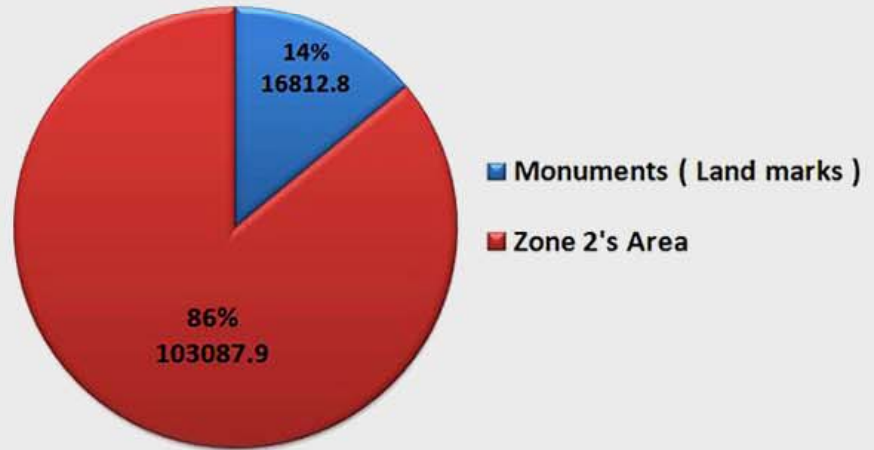
Monument

Area (sq.m)



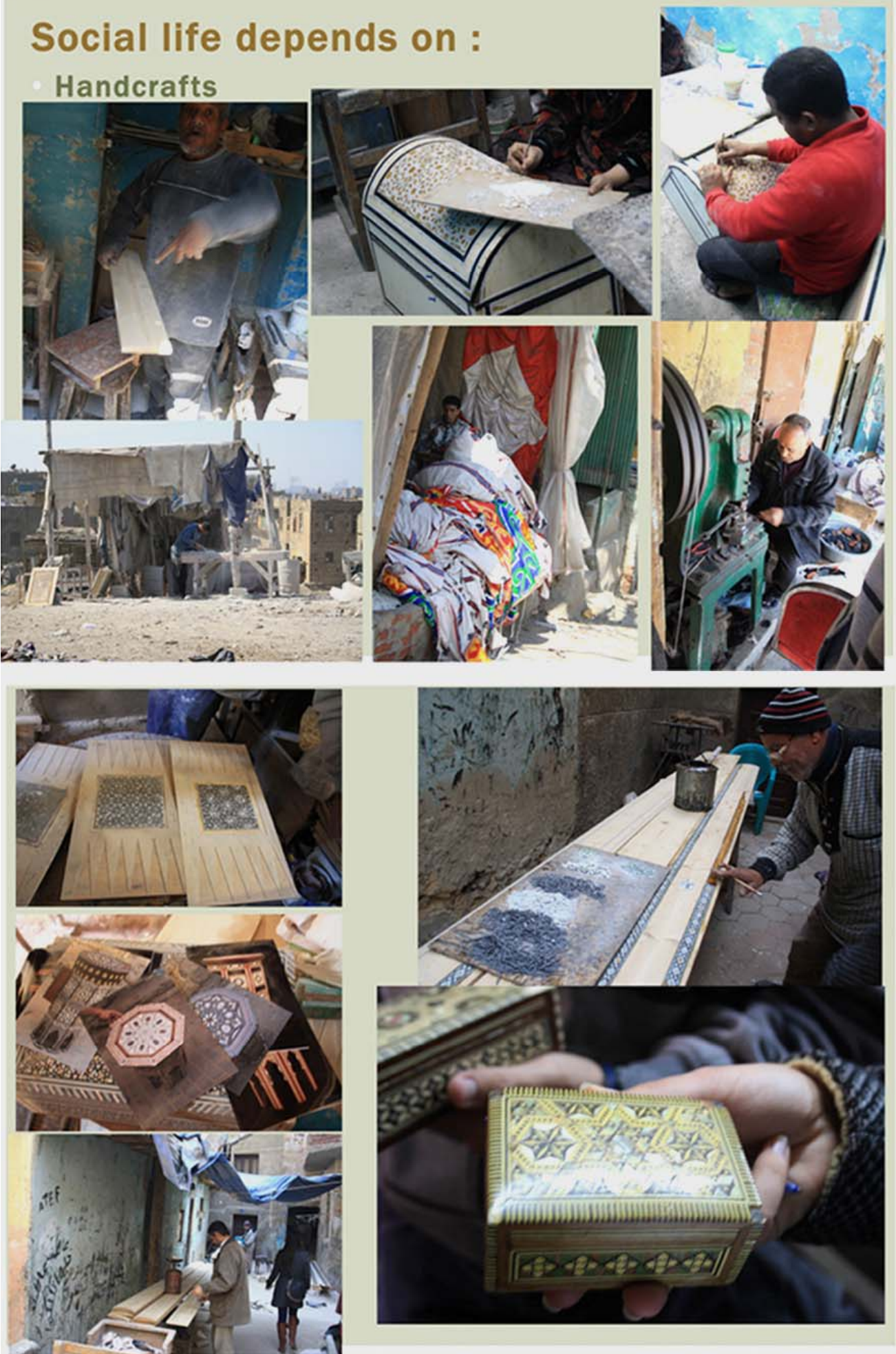
Landmarks To Area Of Zone 2

Area (sq.m)



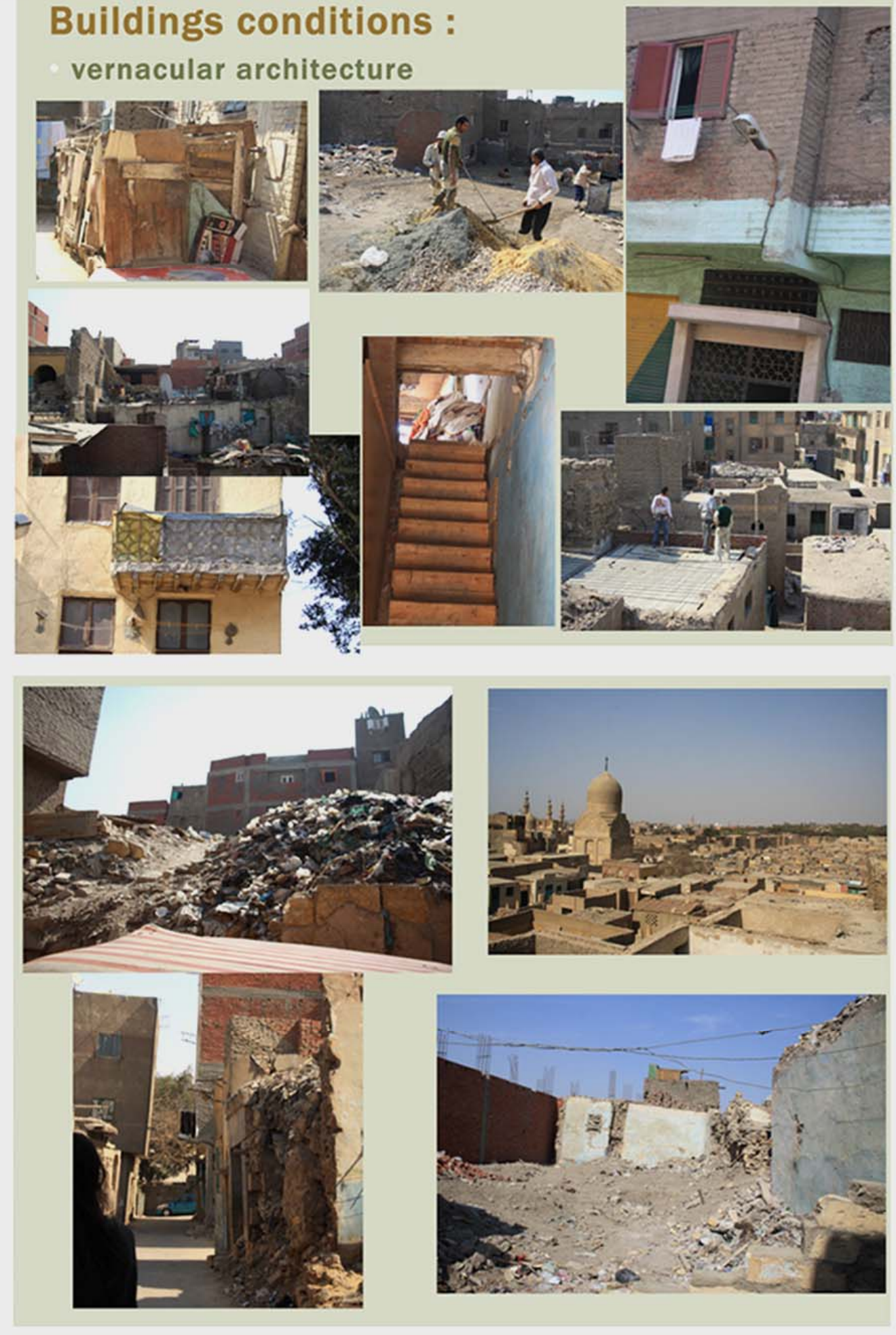
Social life depends on :

- Handcrafts



Buildings conditions :

- vernacular architecture





- peoples behaviour toward the monuments heritage



Some of the peoples solution for the parking problem .
Since its not official but its still works
It need a critical solution



- Problems of MARKETS :
- Most of the building have the mixed use concept`s of the house .. So we are facing a lot of problem in widen the streets . p



- Also they make use of the Islamic feature which was the jewellery of the streets as a material of advertising .



- Proplem of educational culture and awarness :
- Most of people inside the district doesn't know the value of the heritage and most of the monuments are unkown for them
- We recommend to re open this old school again to spread the culture awarness of the heritage



Parking

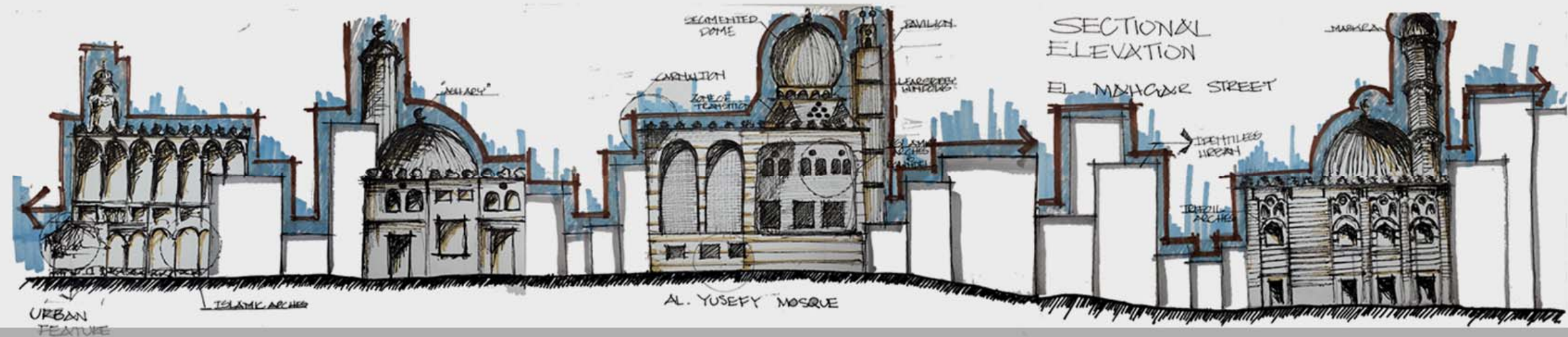
Only space that we can use it as a parking

No parking in this area

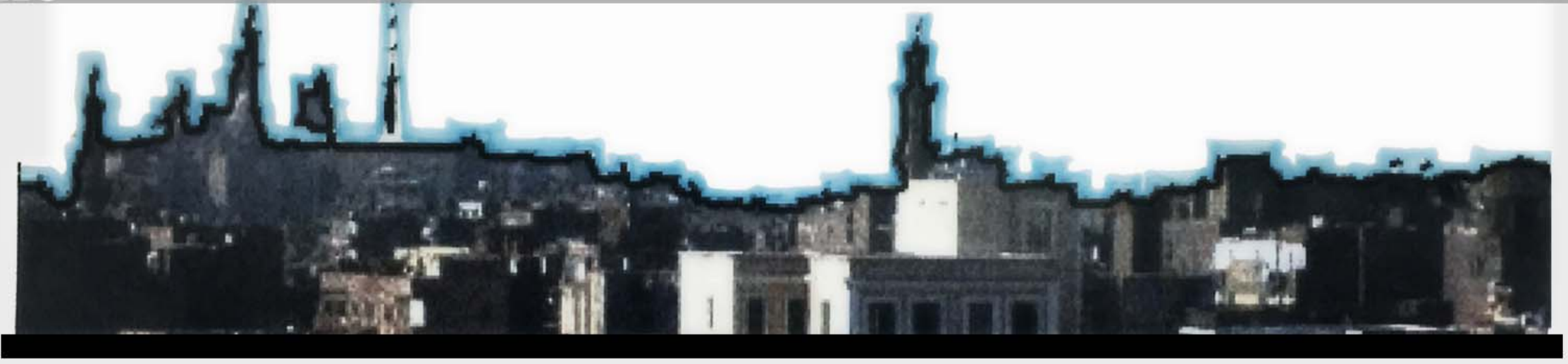


- we have a big advantage in using the open spaces ..in this big area as piazza for meeting the paths in the middle stageits behind the blue mosque

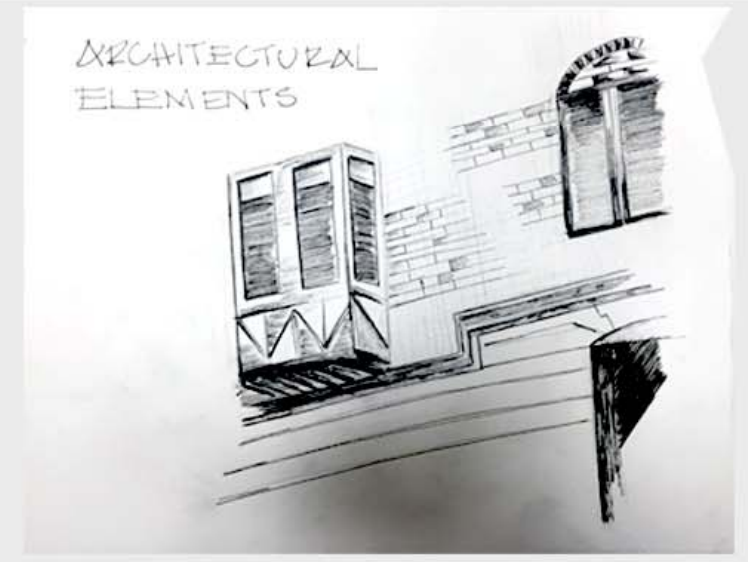
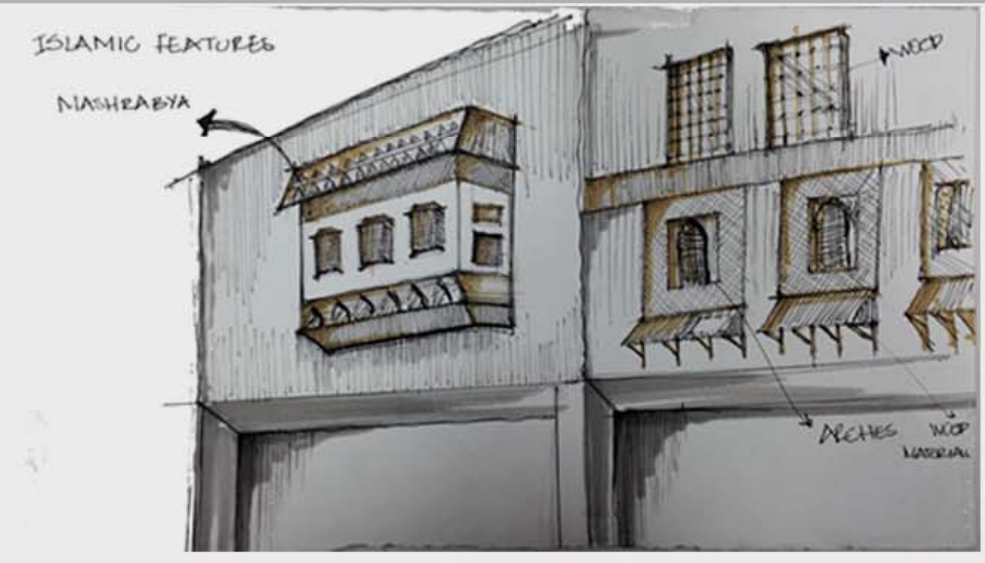
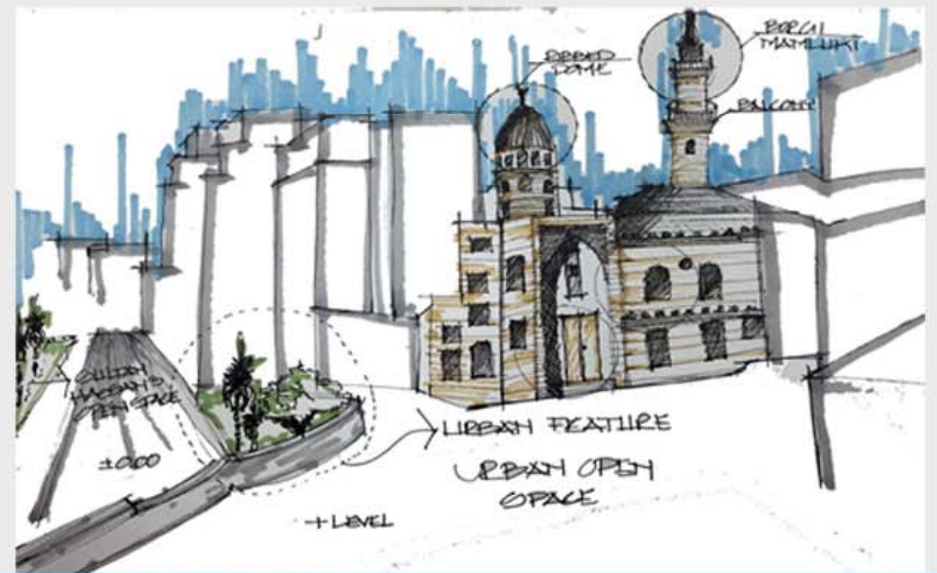
Sectional Elevation



Skyline

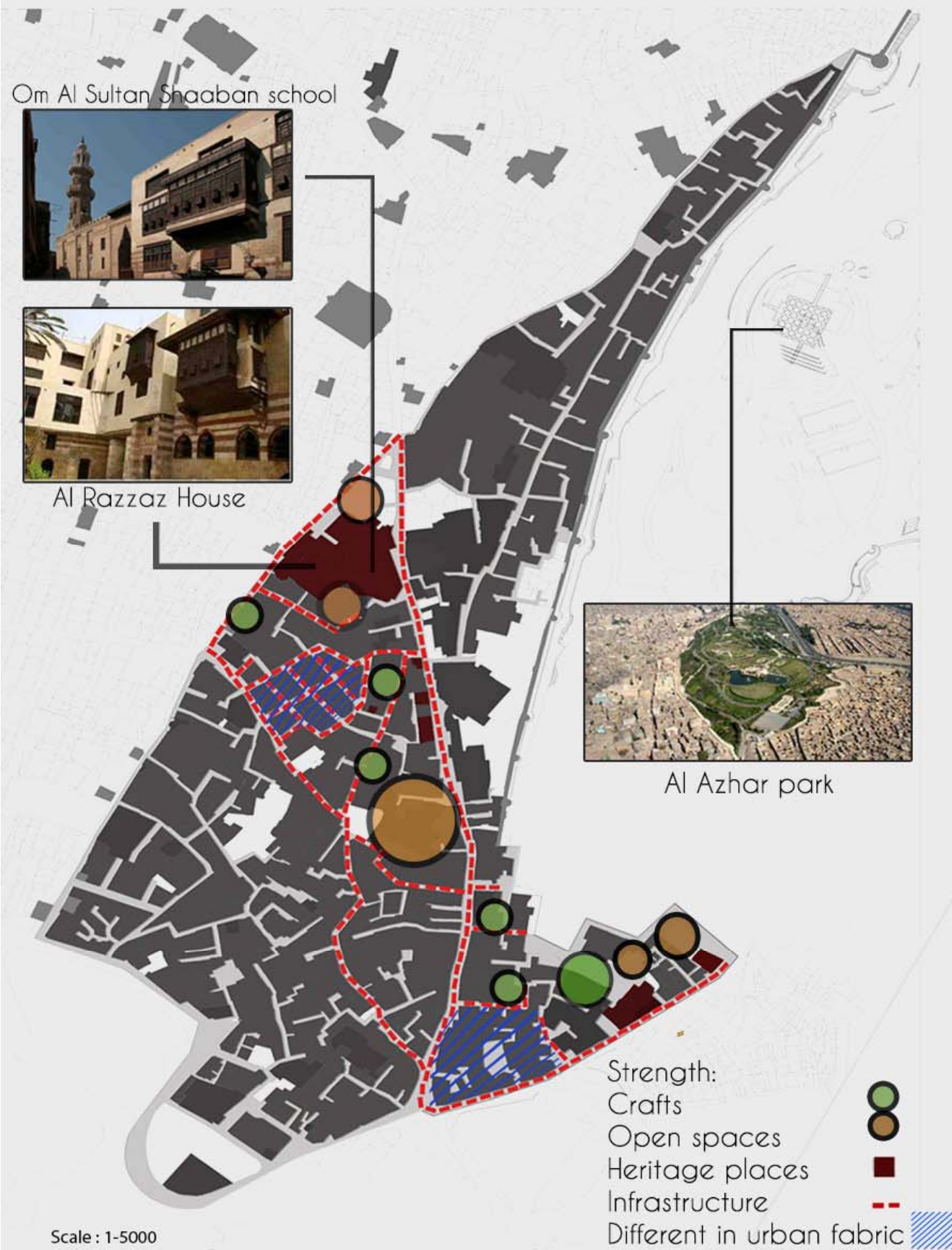


3D & Islamic Details



Strength

- 1-Heritage Places
- 2-Crafts
- 3-Two Piazza
- 4-Dominant Islamic Theme
- 5-Urban Fabric
- 6-Awareness
- 7-The Middle Zone
- 8-skyline 3 to 4 floors only
- 9-Infrastructure
- 10-Unity



Weakness



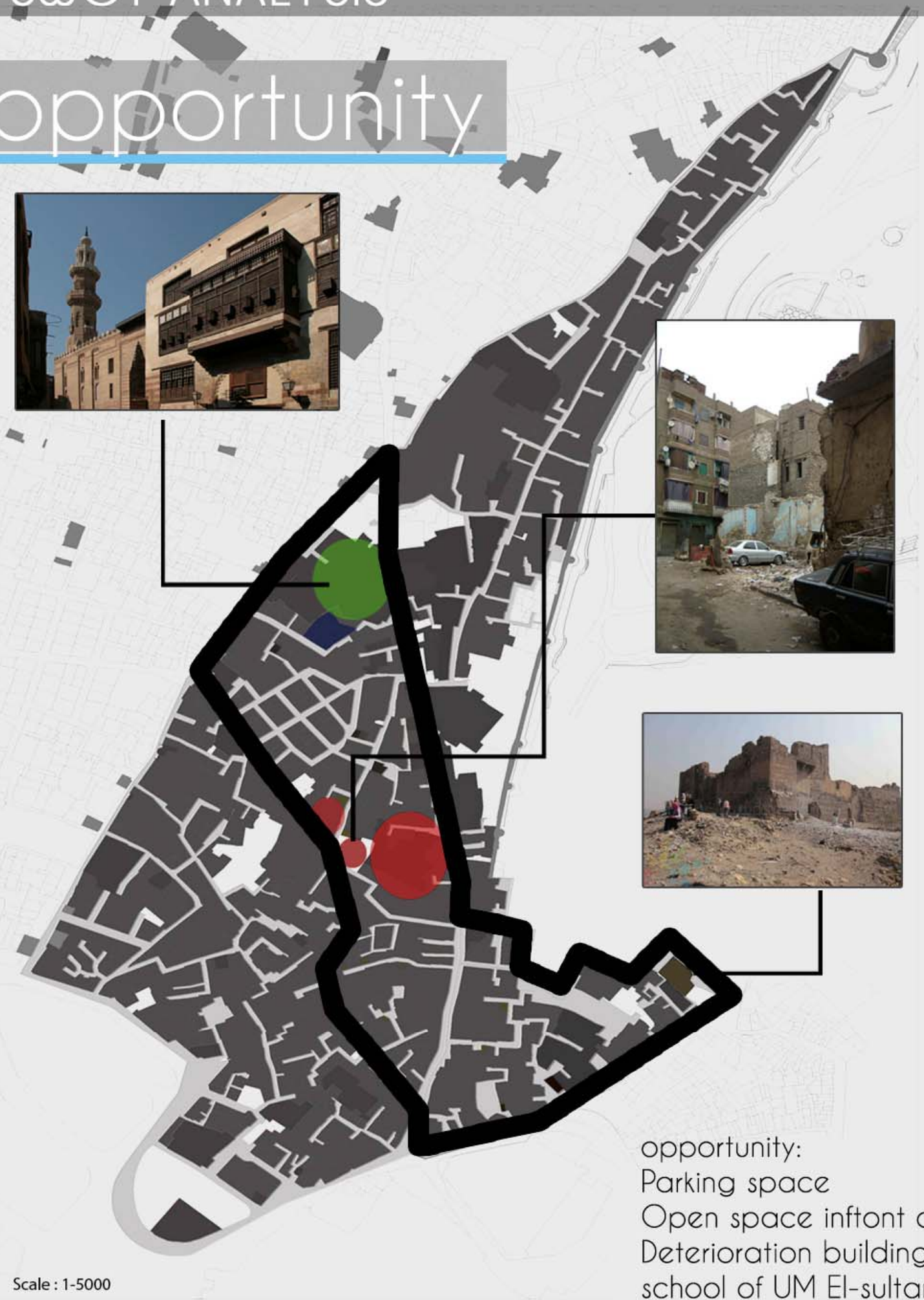
- 1-Garbage
- 2-Behaviour Of People Toward Monuments
- 3-Lack Of Awareness Of Most People
- 4-Lack Of Medical Services
- 5-New Buildings Have No Identity
- 6-Some streets are dusty



Threats

- 1-Extention Of crafts
- 2-Buildings grows higher
- 3-Community doesn't know how to do a change
- 4-The probabiltiy Of buildings Failing apart

opportunity



- 1-Some buildings will be demolished creating more open space
- 2-Parking space
- 3-Schools and mosques can be reopened to public use
- 4-Open space infront of Um El-Sulttan

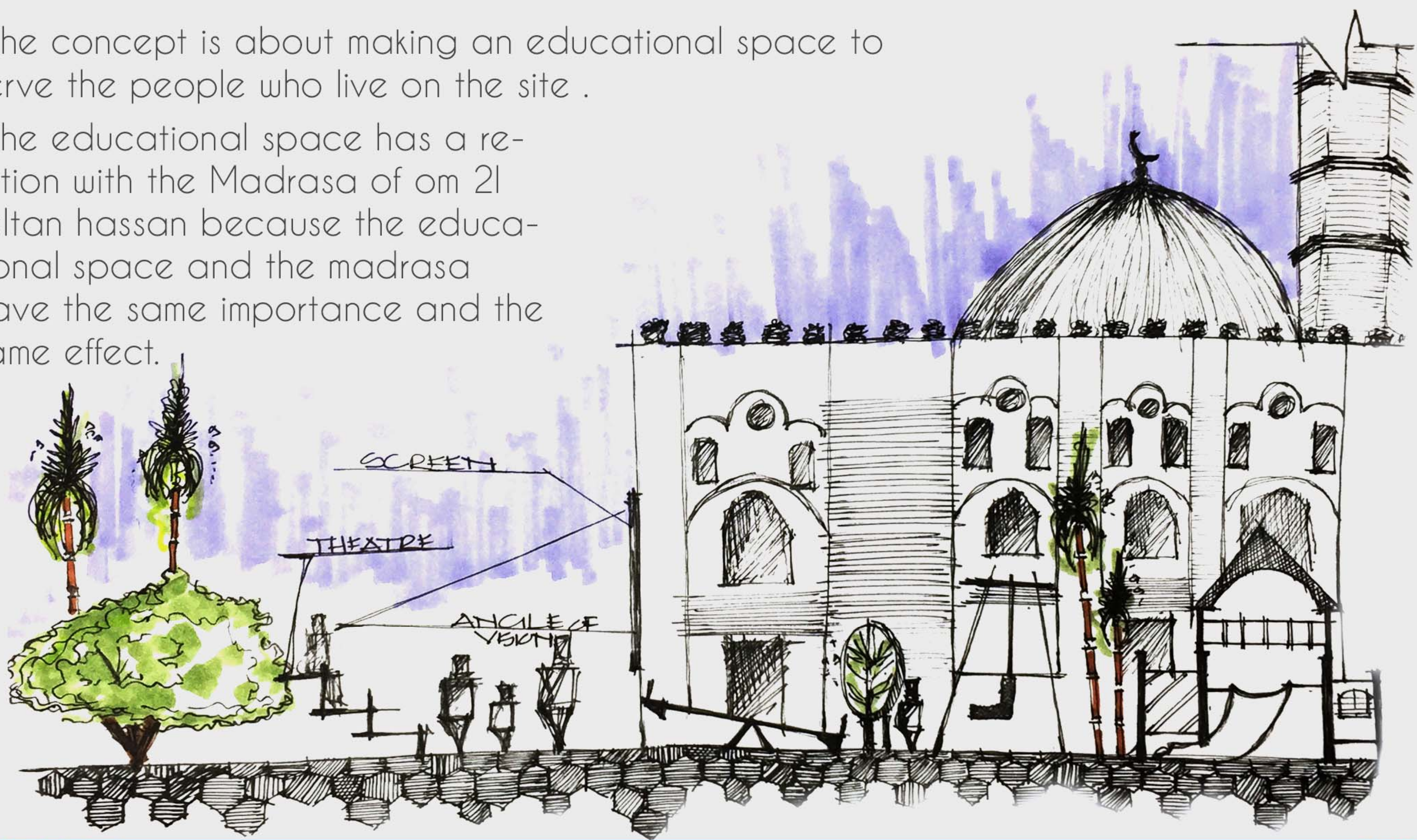
Scale : 1-5000

opportunity:
 Parking space
 Open space infront of Um El-sultan
 Deterioration building
 school of UM El-sultan



open space 1

- The concept is about making an educational space to serve the people who live on the site .
- The educational space has a relation with the Madrasa of om 21 sultan hassan because the educational space and the madrasa have the same importance and the same effect.



concept

Maintainig islamic implementation although providing a modern atmosphere when dealing with the open space

- Classes for teaching crafts are provided under light construction to help avoid craft extinction and to drive crafts men sons to learn the craft
- A vacant wide space is provided giving the living families a space to go to for picnics and enjoy their outdoor activities
- A vacant shaded space is provided infront of the mosque, used on daily basis for outdoor lessons by sheikh and closed when prayer



ARCHES



Arches is an important sign in the Islamic architecture which is known by it ...



WINDOWS

Here the Islamic architecture windows taken privacy as a main idea for their design like "mashrabya"
Detailing Islamic art
Arched windows
Vertical & Horizontal windows for structure system in old traditional there were vertical for using bearing walls and now for using beams

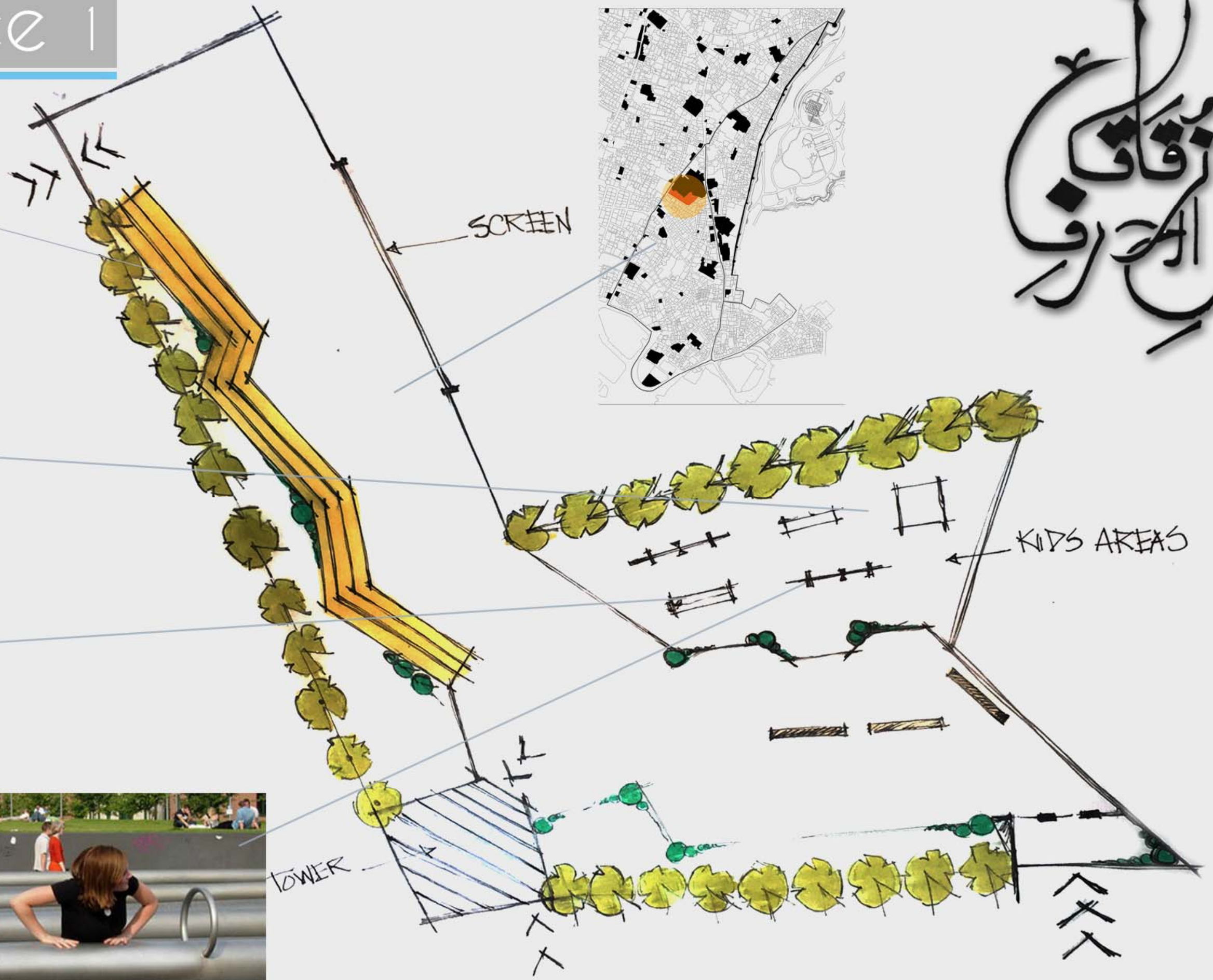


DETAILS

Old Arabic art & curves & Kufic are the main details in traditional style
Also Stalactites in levels



open space 1



Main Concept

Link the Azhar Park with the Historic Place.

Actions

A Path

Azhar Park

Historic Place

Shades

Solutions

- Open Courts (spaces)
- Wide the Roads
- Roof Accesability

Solution Cases

Main Concept

Join between the two places

Azhar Park

Historic Place

6 actions

- 1 Create Open Spaces
- 2 Wide the Roads
- 3 Roof Access

IDEAL

Sub

Vertical

Horizontal

Vertical

Horizontal

irregular open space ①

irregular open space ②

irregular open space ③

irregular open space ④

irregular open space ⑤

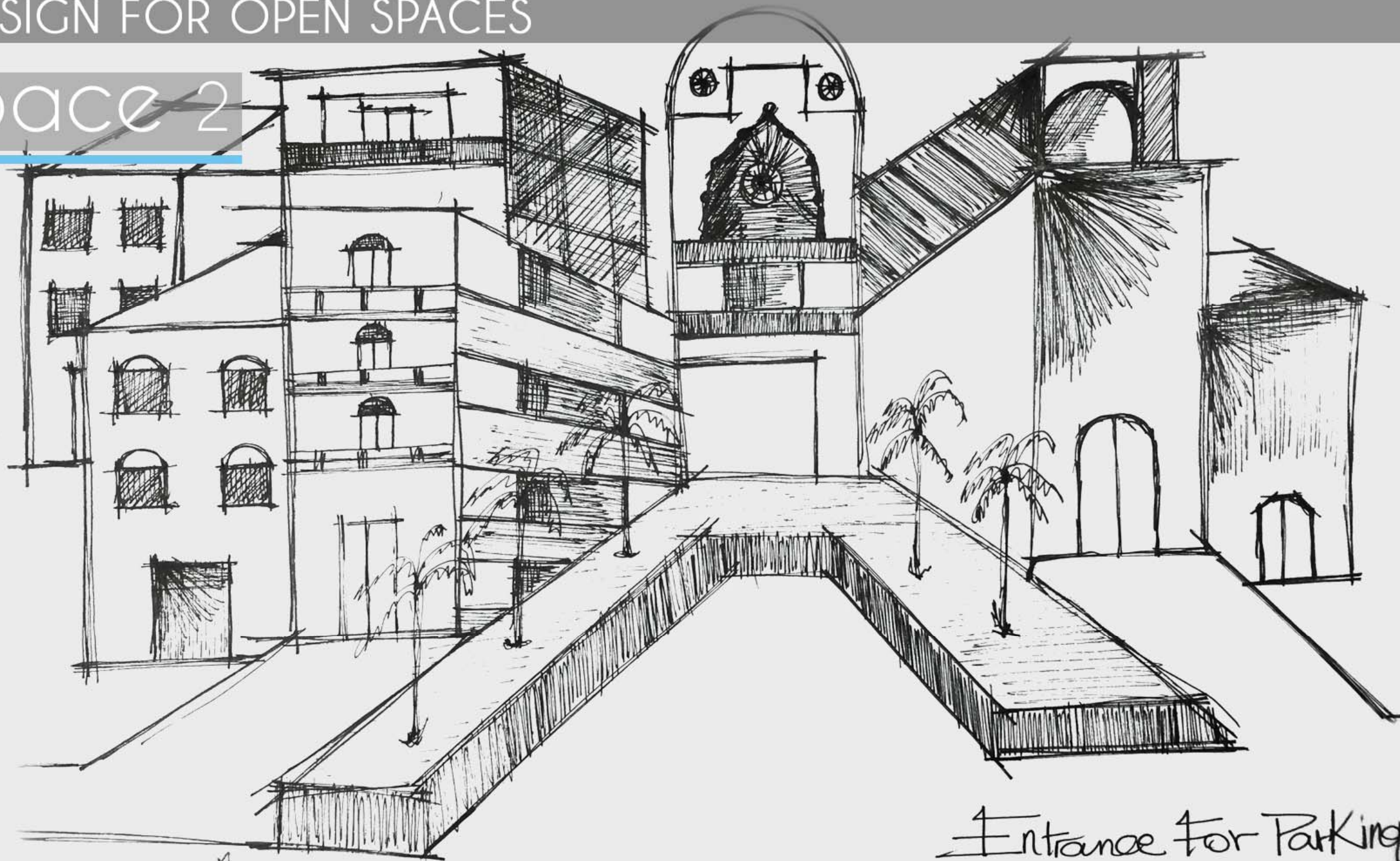
irregular open space ⑥

regular shape open space ①

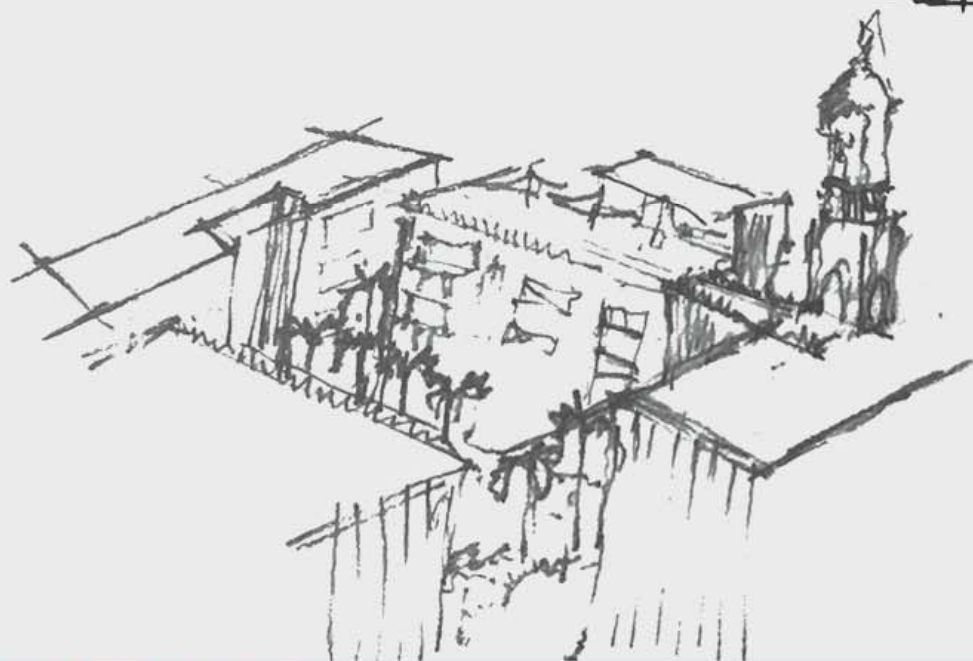
open space 2



open space 2



Entrance for Parking

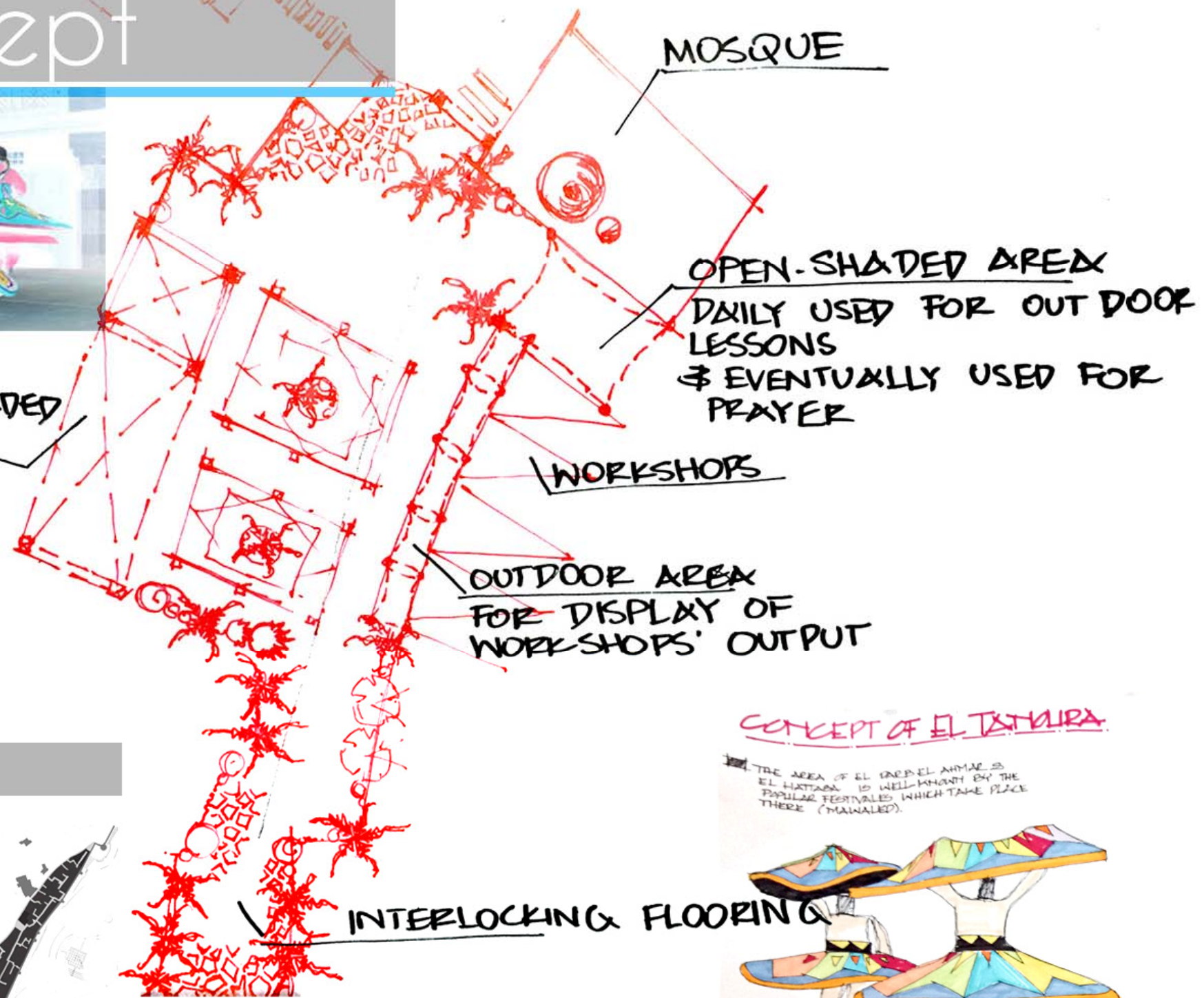


SCHEMATIC DESIGN FOR OPEN SPACES

concept



OUTDOOR SHADED AREA FOR CLASSES FOR TEACHING CRAFTS



Key Map



CONCEPT OF EL TASHLIRA

