



the
UNIVERSITY
of
GREENWICH

Faculty of Engineering

Architectural Systems Engineering

Department Activity

Rasem Badran Workshop Zone3-2014

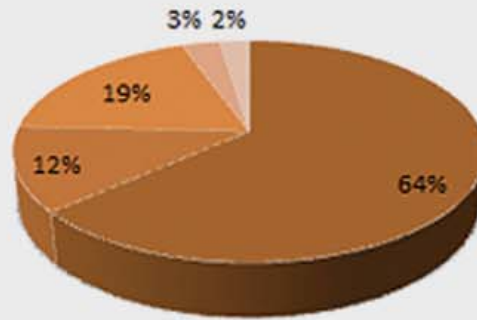


من
قلوب
مصر

Building Materials and Conditions

Bricks	63.09%
Deteriorating bricks	12.17%
Stones	18.69%
Deteriorating Stones	3.05%
Deteriorating Buildings	2.40%

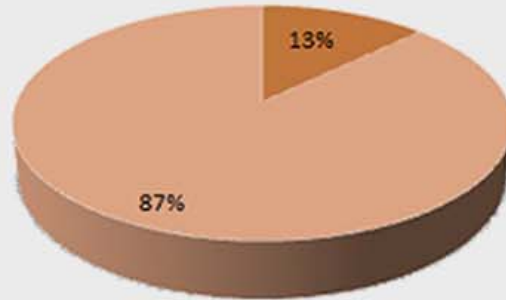
■ Bricks ■ Deteriorating bricks ■ Stones
 ■ Deteriorating Stones ■ Deteriorating Buildings



Land Marks

Historical Buildings	12.78%
Normal Buildings	87.22%

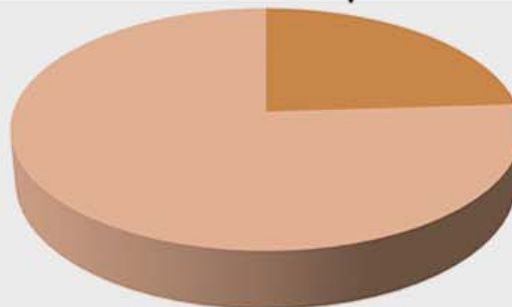
■ Historical Buildings ■ Normal Buildings



LAND USE

RESIDENTIAL	25%
MIXED USE	75%

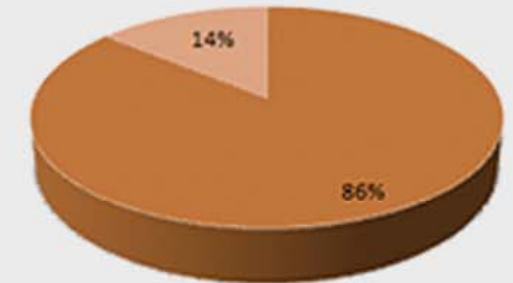
■ Residential
 ■ Mixed Uses



Solid And Void

Solids	86%
Voids	14%

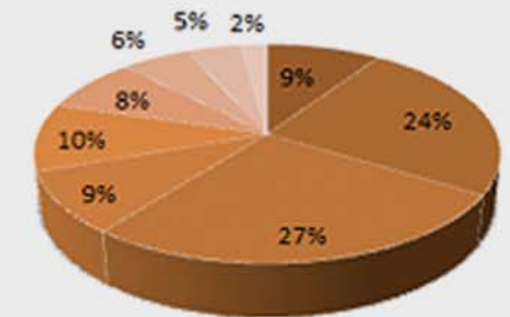
■ Solids ■ Voids



Building Heights

1 Floor	9.4 %
2 Floors	24.4 %
3 Floors	26.7 %
4 Floors	9.1 %
5 Floors	10 %
6 Floors	8.1 %
7 Floors	5.6 %
8 Floors	4.5 %
10 Floors	2.2 %

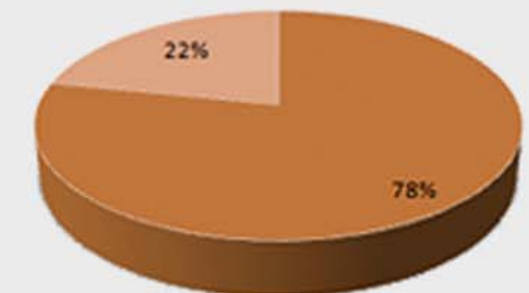
■ 1 Floor ■ 2 Floors ■ 3 Floors ■ 4 Floors ■ 5 Floors
 ■ 6 Floors ■ 7 Floors ■ 8 Floors ■ 10 Floors



Roads

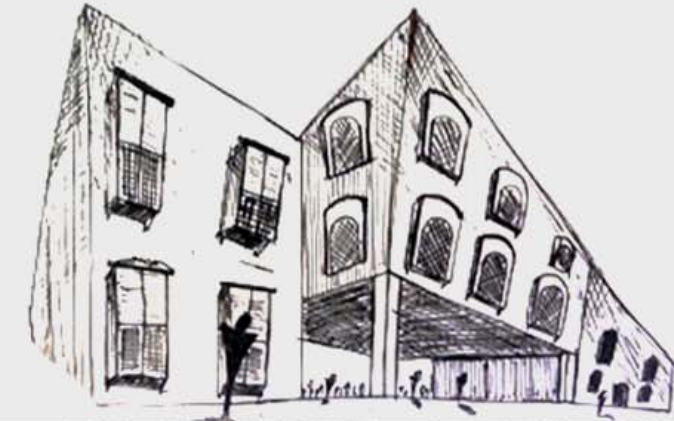
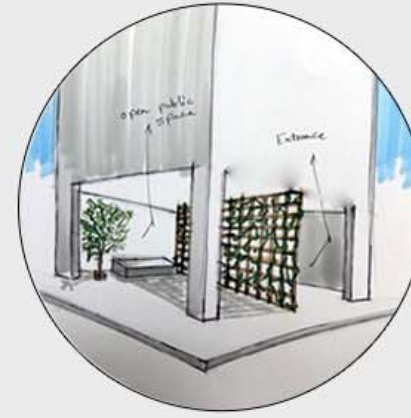
Buildings	78.2%
Roads	21.8 %

■ Buildings ■ Roads



MODIFIED STREET NETWORK

The ground floor in some buildings are removed so that the spine could be continuous. To accommodate for the people's lost spaces, we suggest that we build alternative floors on top of the buildings with a maximum of 4 or 5 floors.



- Vehicles
- Pedestrian

ECONOMICAL OUTCOMES

- Increasing Crafts within the area.
- Enhancing the social level.
- provide jobs .
- increasing the income of the people by :
 - Making the spine as an open gallery for visitors.
- Using The Historical and Heritage Buildings as an attraction aspect for tourists.





Al-Rifa'i elementary school

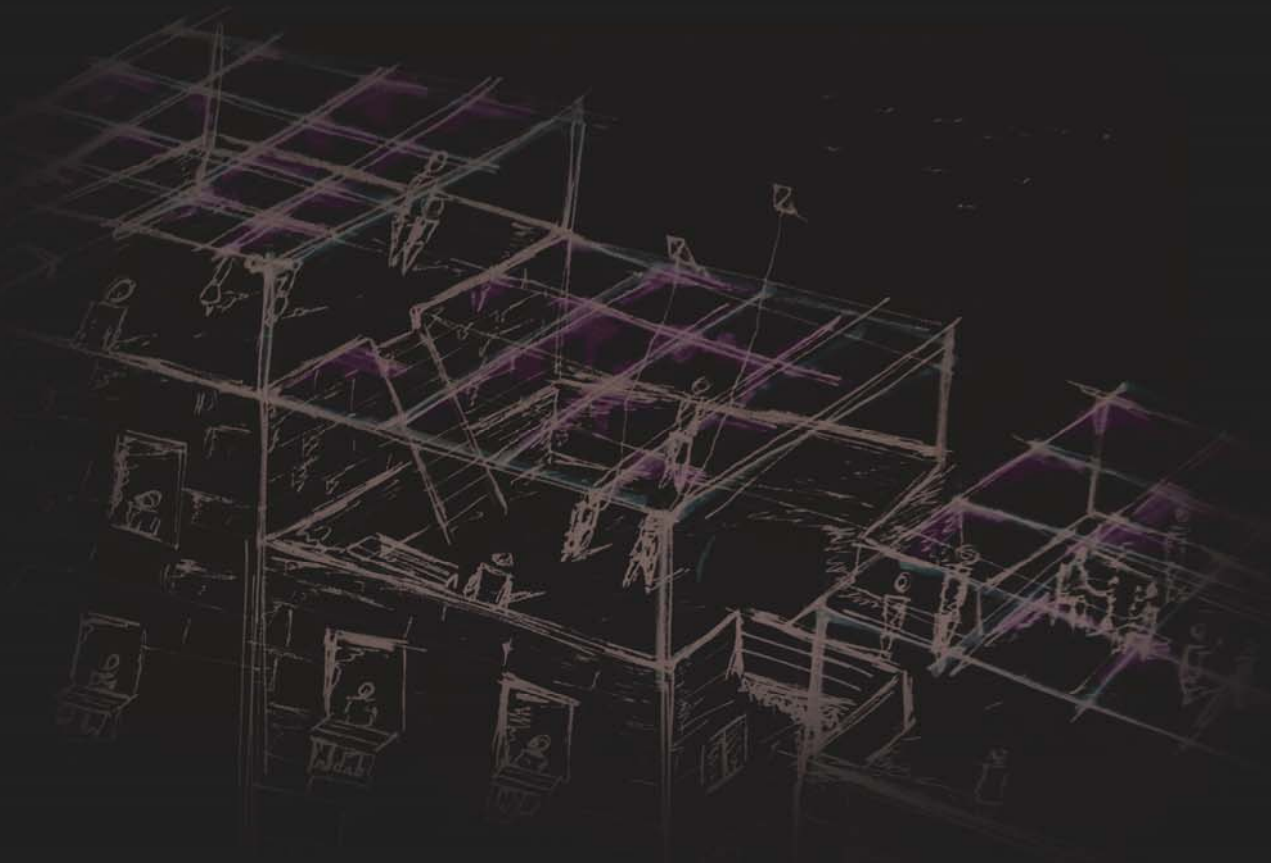
AL-sultan Shahban school



Sabeel



The number of schools in the area is sufficient when it comes to the population study, yet the problem is that the education quality needs improvement with the interference of the government. Also, it will be better the educational activities done in the Sabeels to the actual schools in the area in order to use the Sabeels to maintain the craftman of this area's culture by launching different workshops.



THIS IS AN ENHANCEMENT TO THE ROOFS TO BE USED AS GATHERING SPACES FOR HABITANTS



THIS IS THE CURRENT ARCHITECTURE AND URBAN ELEM. OF THE AREA REPRESENTED IN MSHRABIYA, MINERATES, AND ARABESQUE WINDOWS



THE FIRST FLOOR OF THIS CORNERS CAN BE REMOVED TO BE USED AS NODES OR ANY ACTIVITY

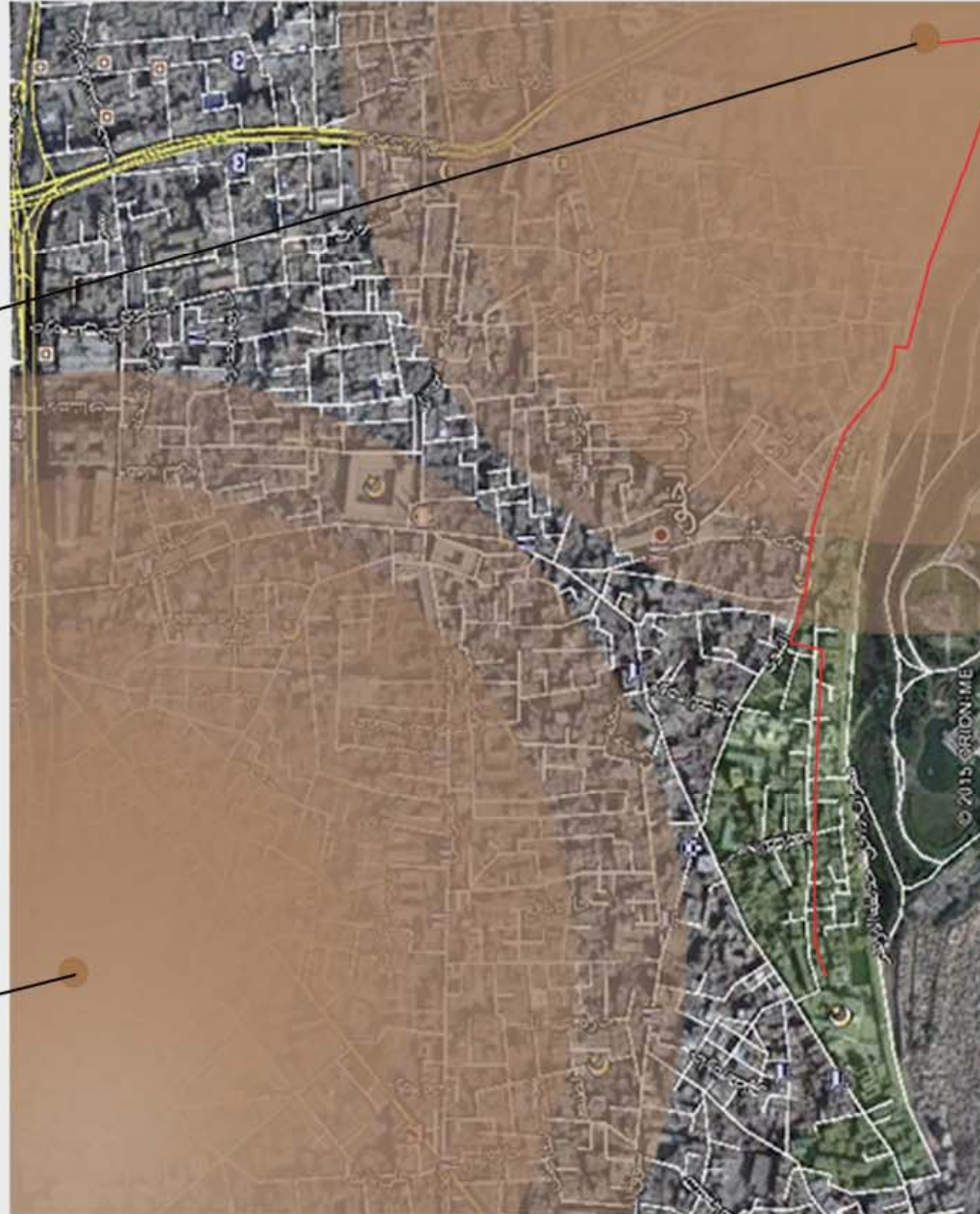
Medical Studies



Hospital Hussein educational away 700 m



Ahmed Maher educational Hospital located 700 m



Since the people had no Problems with the existing hospitals we just placed a clinic instead of a 1 floor deteriorated buildings, and we moved its residents to another building .

Fire Issues

, Since it is almost impossible to permit fire trucks inside the region it is suggested to place fire hydrants every 400 m in the whole .zone

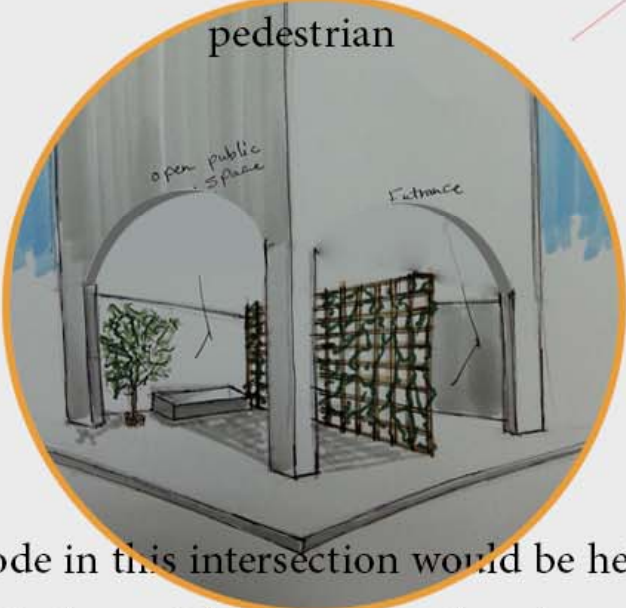




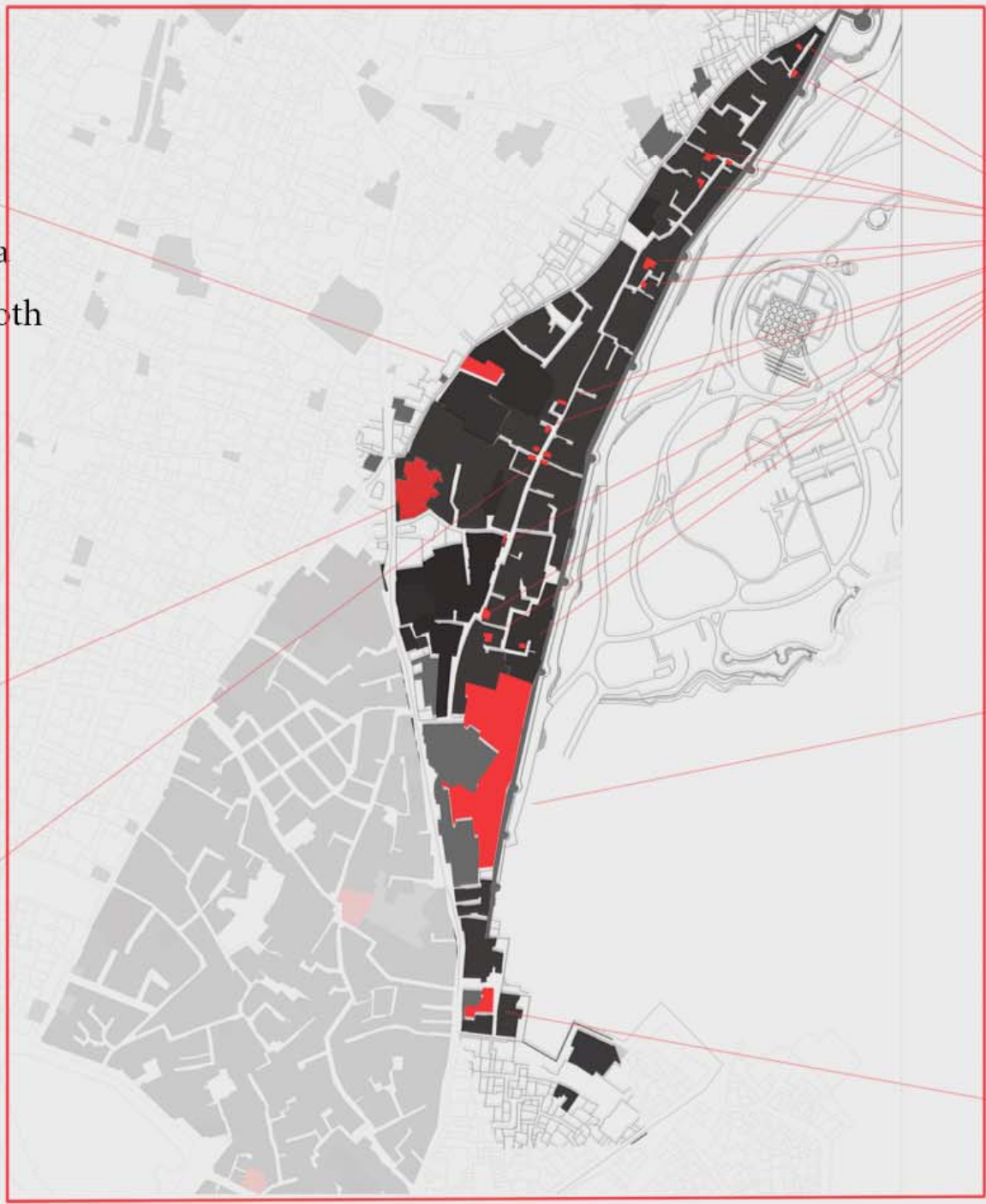
moving the playground from the fence area to the school court will make it usable for both the students and the youth



a parking in this place is very efficient as most of the streets in the area are now only



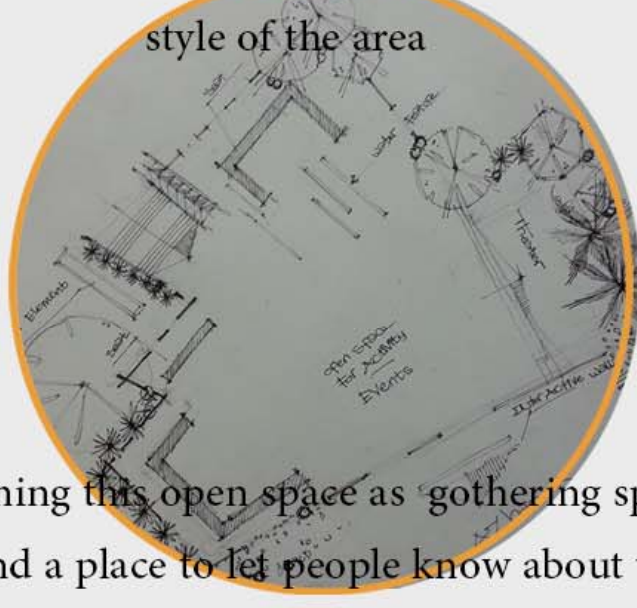
a node in this intersection would be helpful with the social aspect to gather the people



although the people of this area have a good social life, we are trying to enhance it by creating a new gathering spaces through out the whole area including roofs, and nodes



keeping monuments from the deteriorated building will be giving the architectural style of the area



planing this open space as gathering space and a place to let people know about the culture of the area through a theater



this place will be used as a place to pray and . a place for gathering

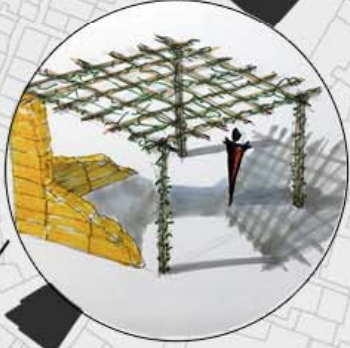
STRATEGIC PLAN

El Hussein Hospital Service Margin Zone

من قلب مصر



Suggested Emptied Ground Level for the modification of the Main Spine

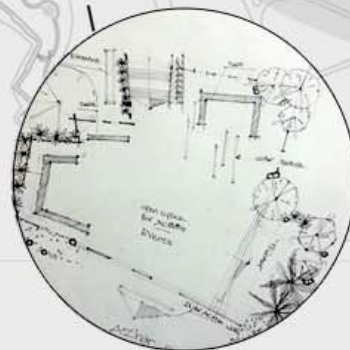


Al-Sultan Shaban School

Sabeel



Al-Rifa'i Elementary School



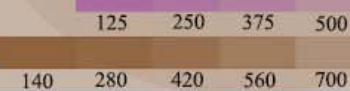
- Environmental
 - Walkable Main Spine
- Educational
 - Governmental Schools
 - Sabeel Kotab
- Urban
 - Street Network (Vehicles, Pedestrian)
 - Landscape
 - Open Spaces
- Economical
- Cultural and Social
- Architectural
- Services

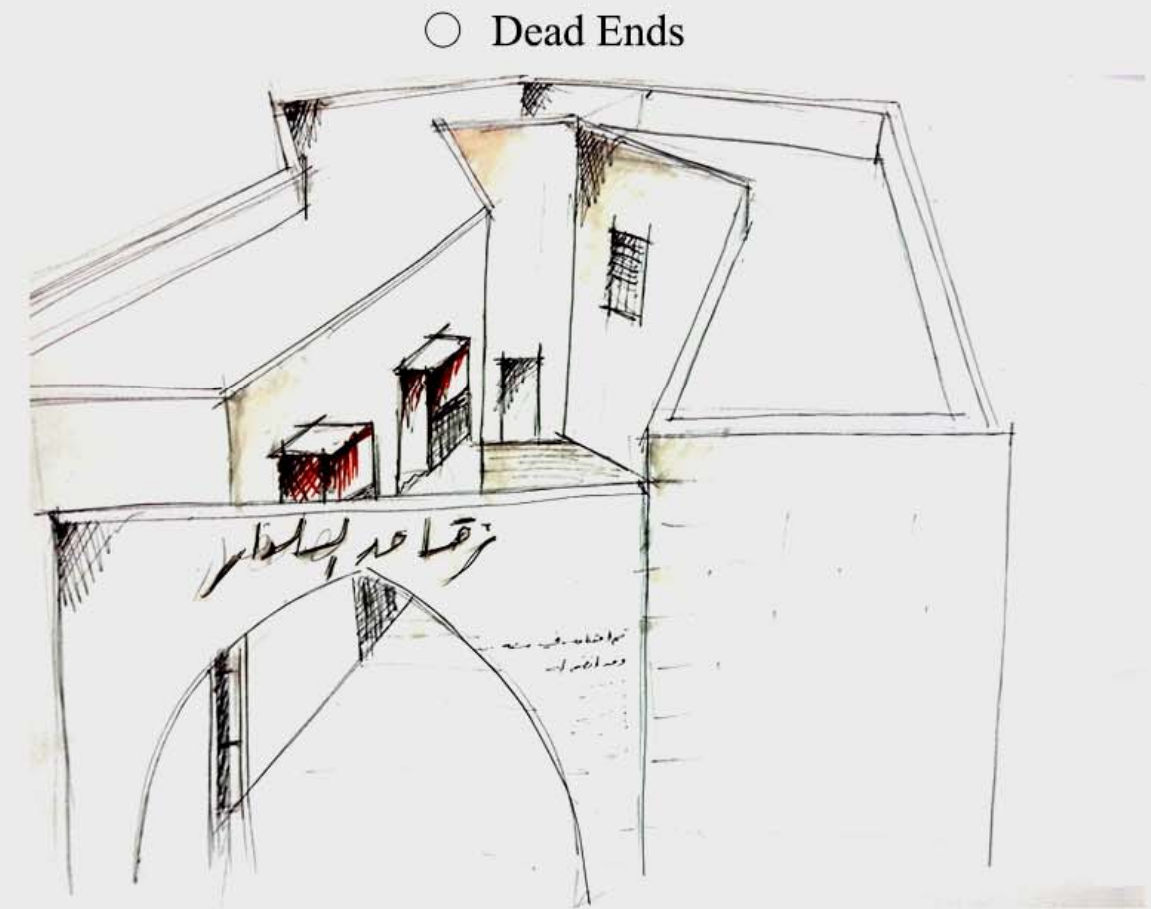
Surrounding Hospitals' 700 m margin zone (Existing)

Emergency Clinic in one of the buildings (Implemented)

Fire Hydrants every every 400 m (Implemented)

Ahmed Maher Educational Hospital Service Margin Zone

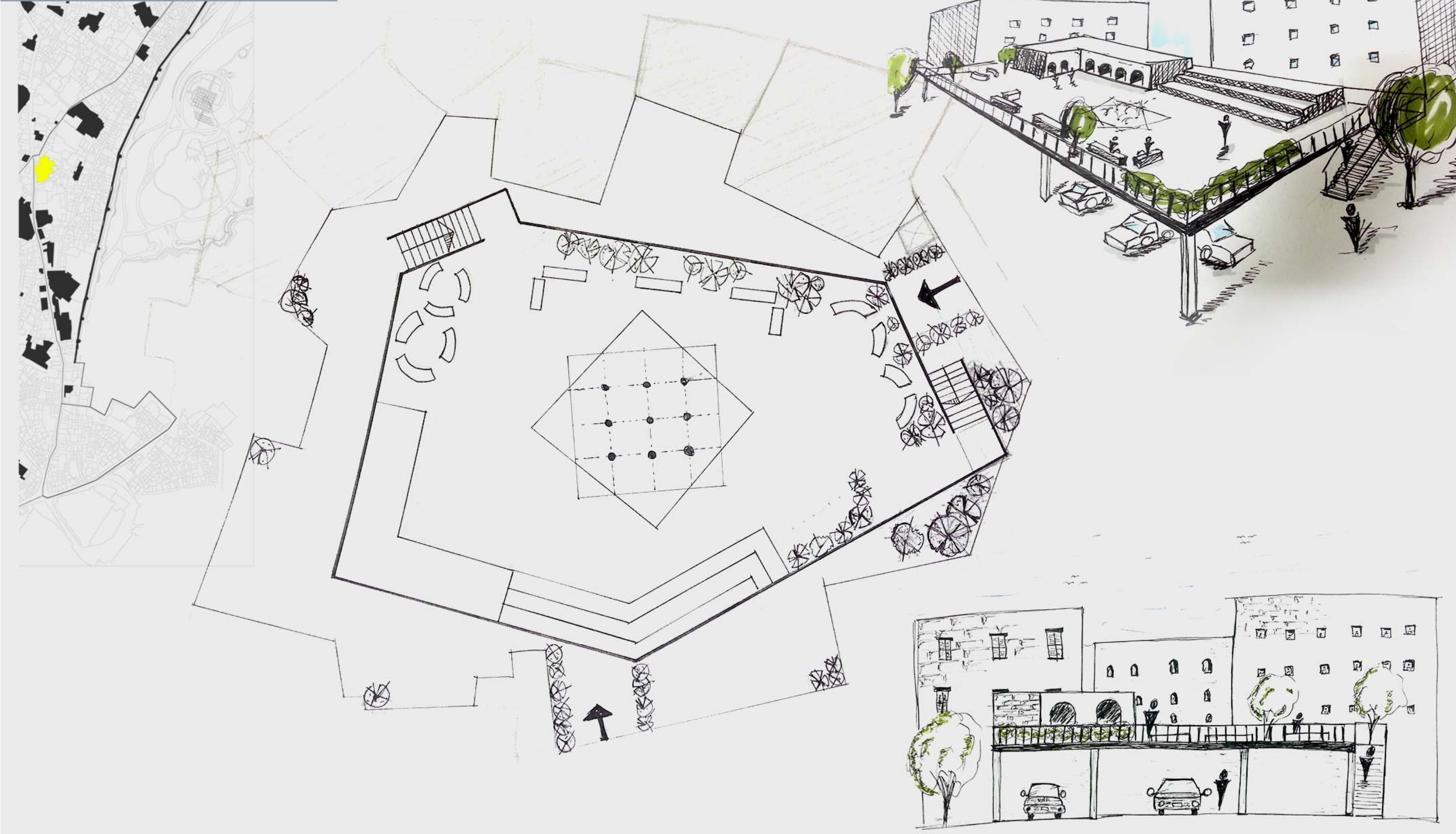




We re-designed the dead-end spaces through reviving the cultural heritage of storytelling in this part of Egypt.

PARKING TURNED INTO A RECREATIONAL AREA

open space 2

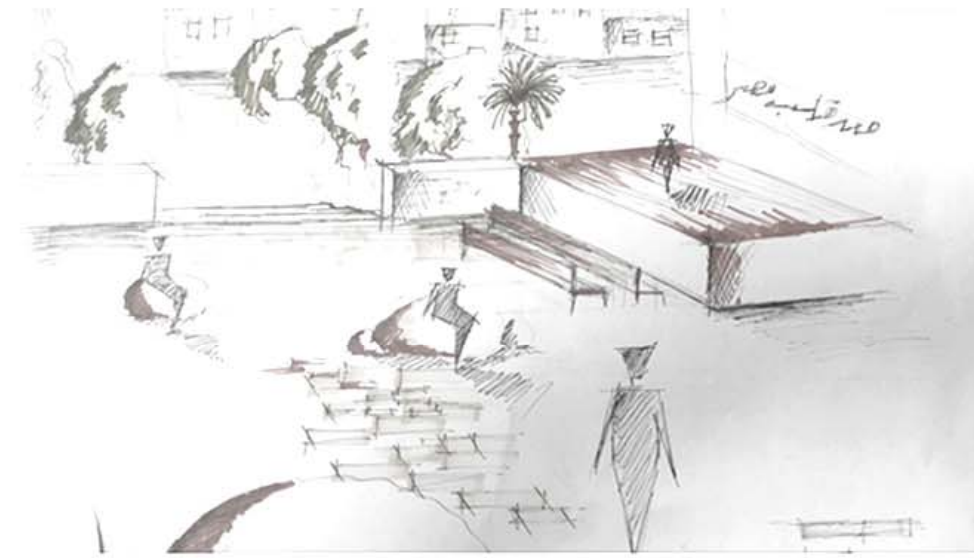




1



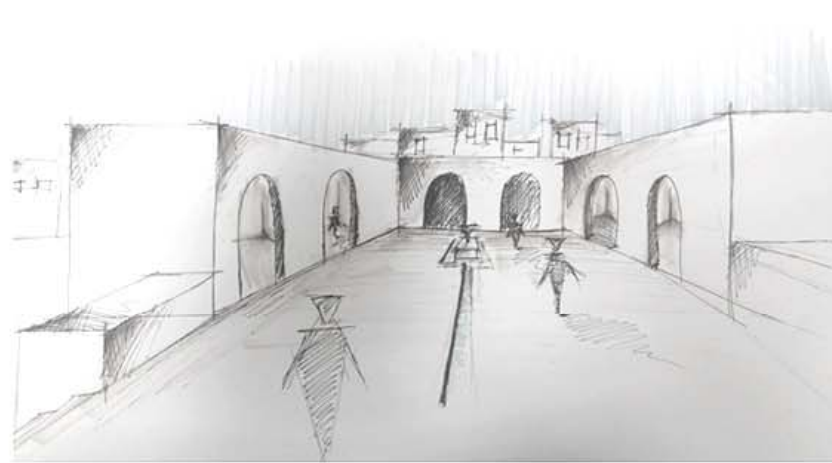
OpenSooq.com



2

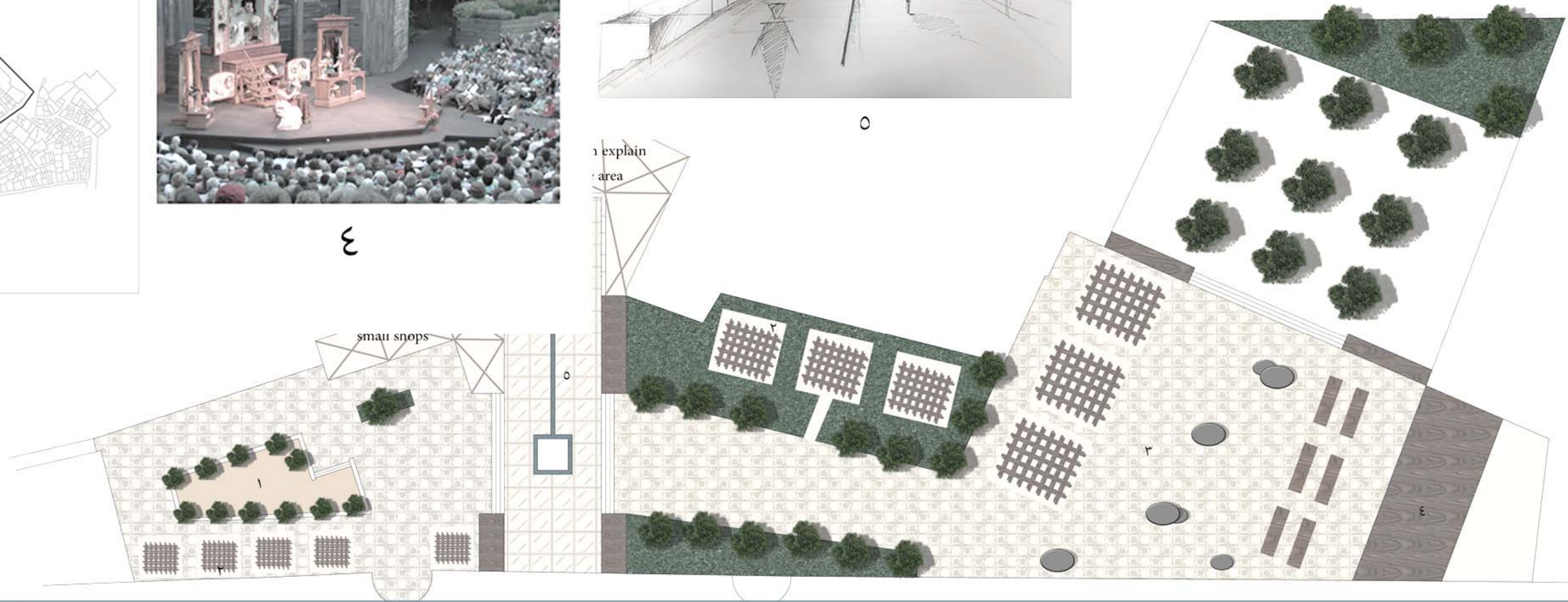


3



0

1 explain
2 area



open space 1

